

DIESEL GENERATOR SET



DE55E0

*Diesel Generator Set
Exclusively from your Cat® dealer*

Image shown may not reflect actual package

Output Ratings		
Generator Set Model - 3 Phase	Prime*	Standby*
400/230 V, 50 Hz	50.0 kVA 40.0 kW	55.0 kVA 44.0 kW
480V, 60 Hz	56.3 kVA 45.0 kW	62.5 kVA 50.0 kW

* Refer to ratings definitions on page 4.
Ratings at 0.8 power factor.

Technical Data		
Engine Make & Model:	Cat C3.3	
Generator Model:	LC1514N	
Control Panel:	EMCP 4.1	
Base Frame Type:	Heavy Duty Fabricated Steel	
Circuit Breaker Type:	3 Pole MCB / 3 Pole MCCB	
Frequency:	50 Hz	60 Hz
Engine Speed: RPM	1500	1800
Fuel Tank Capacity: litres (US gal)	219 (57.9)	
Fuel Consumption, Prime: l/hr (US gal/hr)	11.5 (3.0)	13.6 (3.6)
Fuel Consumption, Standby : l/hr (US gal/hr)	12.7 (3.4)	15.1 (4.0)

DIESEL GENERATOR SET



Engine Technical Data

Physical Data	
Manufacturer:	Caterpillar
Model:	C3.3
No. of Cylinders/Alignment:	3 / In Line
Cycle:	4 Stroke
Induction:	Turbocharged
Cooling Method:	Water
Governing Type:	Mechanical
Governing Class:	ISO 8528 G2
Compression Ratio:	17.25:1
Displacement: l (cu.in)	3.3 (201.4)
Bore/Stroke: mm (in)	105.0 (4.1)/127.0 (5.0)
Moment of Inertia: kg m ² (lb. in ²)	1.14 (3896)
Engine Electrical System:	
-Voltage/Ground:	12/Negative
-Battery Charger Amps:	65
Weight: kg (lb) - Dry:	420 (926)
- Wet:	438 (966)

Air System	50 Hz	60 Hz
Air Filter Type:	Replaceable Element	
Combustion Air Flow:		
m ³ /min (cfm)	-Standby: 3.9 (138)	4.9 (173)
	-Prime: 3.8 (134)	4.7 (166)
Max. Combustion Air Intake		
Restriction: kPa (in H ₂ O)	8.0 (32.1)	8.0 (32.1)
Radiator Cooling Air Flow:		
m ³ /min (cfm)	110.4 (3899)	145.8 (5149)
External Restriction to		
Cooling Air Flow: Pa (in H ₂ O)	120 (0.5)	120 (0.5)

Cooling System	50 Hz	60 Hz
Cooling System Capacity:		
l (US gal)	10.2 (2.7)	10.2 (2.7)
Water Pump Type:	Centrifugal	
Heat Rejected to Water & Lube Oil: kW (Btu/min)		
	-Standby: 38.0 (2161)	43.0 (2445)
	-Prime: 35.0 (1990)	41.0 (2332)
Heat Radiation to Room: Heat radiated from engine and alternator		
kW (Btu/min)	-Standby: 16.4 (933)	16.9 (961)
	-Prime: 14.6 (830)	16.0 (910)
Radiator Fan Load: kW (hp)	1.0 (1.3)	1.7 (2.3)
Cooling system designed to operate in ambient conditions up to 50°C (122°F). Contact your local Cat dealer for power ratings at specific site conditions.		

Lubrication System	
Oil Filter Type:	Spin-On, Full Flow
Total Oil Capacity l (US gal):	8.3 (2.2)
Oil Pan l (US gal):	7.8 (2.1)
Oil Type:	API CG4 / CH4 15W-40
Cooling Method:	Water

Performance	50 Hz	60 Hz
Engine Speed: RPM	1500	1800
Gross Engine Power: kW (hp)		
-Standby:	60.5 (81.0)	69.6 (93.0)
-Prime:	55.0 (74.0)	63.3 (85.0)
BMEP: kPa (psi)		
-Standby:	1467.0 (212.8)	1407.0 (204.0)
-Prime:	1333.0 (193.4)	1279.0 (185.5)
Regenerative Power: kW	7.0	9.0

Fuel System				
Fuel Filter Type:	Replaceable Element			
Recommended Fuel:	Class A2 Diesel or BSEN590			
Fuel Consumption: l/hr (US gal/hr)				
	110% Load	100% Load	75% Load	50% Load
Prime				
50 Hz	12.7 (3.4)	11.5 (3.0)	8.7 (2.3)	6.2 (1.6)
60 Hz	15.1 (4.0)	13.6 (3.6)	10.4 (2.7)	7.6 (2.0)
Standby				
50 Hz		12.7 (3.4)	9.5 (2.5)	6.7 (1.8)
60 Hz		15.1 (4.0)	11.4 (3.0)	8.2 (2.2)
(based on diesel fuel with a specific gravity of 0.85 and conforming to BS2869, Class A2)				

Exhaust System	50 Hz	60 Hz
Silencer Type:	Industrial	
Silencer Model & Quantity:	EXSY1 (1)	
Pressure Drop Across		
Silencer System: kPa (in Hg)	0.82 (0.242)	1.08 (0.319)
Silencer Noise Reduction		
Level: dB	16	18
Max. Allowable Back		
Pressure: kPa (in. Hg)	10.0 (3.0)	15.0 (4.4)
Exhaust Gas Flow:		
m ³ /min (cfm)	-Standby: 8.8 (311)	10.6 (374)
	-Prime: 8.4 (297)	9.8 (346)
Exhaust Gas Temperature: °C (°F)		
-Standby:	483 (901)	477 (891)
-Prime:	464 (867)	445 (833)

DIESEL GENERATOR SET



Generator Performance Data

Data Item	50 Hz				60 Hz				
	415/240V	400/230V 230/115V 200/115V	380/220V 220/110V	220/127V	480/277V 240/139V	380/220V 220/110V	240/120V 208/120V		440/254V 220/127V
Motor Starting Capability* kVA	121	115	107	132	131	93	107	-	123
Short Circuit Capacity** %	300	300	300	300	300	300	300	300	300
Reactances: Per Unit									
Xd	2.480	2.670	2.958	1.898	2.505	3.657	3.336	-	2.982
X'd	0.132	0.142	0.157	0.101	0.133	0.194	0.177	-	0.158
X''d	0.066	0.071	0.079	0.050	0.067	0.097	0.089	-	0.079

Reactances shown are applicable to prime ratings.

*Based on 30% voltage dip at 0.6 power factor and SHUNT excitation system.

** With optional Permanent Magnet generator

Generator Technical Data

Physical Data	
LC Series	
Model:	LC1514N
No. of Bearings:	1
Insulation Class:	H
Winding Pitch - Code:	2/3 - 6
Wires:	12
Ingress Protection Rating:	IP23
Excitation System:	SHUNT
AVR Model:	R220

Operating Data	
Overspeed: RPM	2250
Voltage Regulation: (steady state)	+/- 1.0%
Wave Form NEMA = TIF:	50
Wave Form IEC = THF:	2.0%
Total Harmonic Content LL/LN:	2.0%
Radio Interference:	Suppression is in line with European Standard EN61000-6
Radiant Heat: kW (Btu/min)	
-50 Hz:	5.4 (307)
-60 Hz:	5.9 (336)

DIESEL GENERATOR SET



Technical Data

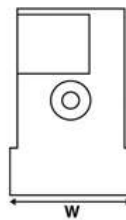
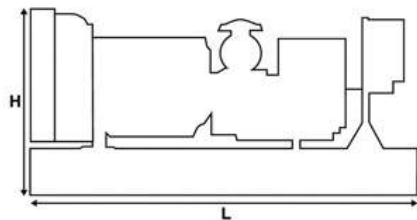
Voltage 50 Hz	Prime		Standby	
	kVA	kW	kVA	kW
415/240V	50.0	40.0	55.0	44.0
400/230V	50.0	40.0	55.0	44.0
380/220V	50.0	40.0	55.0	44.0
230/115V	50.0	40.0	55.0	44.0
220/127V	43.0	34.4	47.3	37.8
220/110V	50.0	40.0	55.0	44.0
200/115V	50.0	40.0	55.0	44.0

Voltage 60 Hz	Prime		Standby	
	kVA	kW	kVA	kW
480/277V	56.3	45.0	62.5	50.0
220/127V	56.3	45.0	62.5	50.0
380/220V	51.5	41.2	56.7	45.4
240/120V	56.3	45.0	62.5	50.0
440/254V	56.3	45.0	62.5	50.0
220/110V	51.5	41.2	56.7	45.4
208/120V	56.3	45.0	62.5	50.0
240/139V	56.3	45.0	62.5	50.0

Weights & Dimensions

Weights: kg (lb)	
Net (+ lube oil)	863 (1902)
Wet (+ lube oil & coolant)	876 (1931)
Fuel, lube oil & coolant	1061 (2340)

Dimensions: mm (in)	
Length	1925 (75.8)
Width	1120 (44.1)
Height	1361 (53.6)



Note: General configuration not to be used for installation. See general dimension drawings for detail.

Definitions

Standby Rating

These ratings are applicable for supplying continuous electrical power (at variable load) in the event of a utility power failure. No overload is permitted on these ratings. The alternator on this model is peak continuous rated (as defined in ISO 8528-3).

Prime Rating

Output available with varying load for an unlimited time. Average power output is 70% of the prime power rating. Typical peak demand is 100% of prime rated kW with 10% overload capability for emergency use for a maximum of 1 hour in 12. Overload operation cannot exceed 25 hours per year.

Standard Reference Conditions

Note: Standard reference conditions 25°C (77°F) air inlet temp, 100m (328ft) A.S.L. 30% relative humidity. Fuel consumption data at full load with diesel fuel with specific gravity of 0.85 and conforming to BS2869: 1998, Class A2.

General Data

Documents

A full set of operation and maintenance manuals and circuit wiring diagrams.

Quality Standards

The equipment meets the following standards: IEC60034-1, IEC60034-22, ISO3046, ISO8528, NEMA MG 1-32, NEMA MG 1-33, 2004/108/EC, 2006/42/EC, 2006/95/EC.

Performance No: P2506A, P2506B P2620A, P2620B

Feature Code: C03DE35, C03DE36, C03DE37, C03DE38, C03DE69,

C03DE70, C03DE71, C03DE72

Gen. Arr. Number: 459-4403

Source: Internationally Sourced

LEHE0697-00 (08/14)

www.Cat-ElectricPower.com

© 2014 Caterpillar
All rights reserved.

Materials and specifications are subject to change without notice. The International System of Units (SI) is used in this publication. CAT, CATERPILLAR, their respective logos, "Caterpillar Yellow," the "Power Edge" trade dress, as well as corporate and product identity used herein, are trademarks of Caterpillar and may not be used without permission.